



Ejector Punch Components

Basic and Ball Lock Series

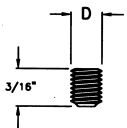
Available in single sets which include pin, spring and set screw; or individual components in minimum quantities of 10 pieces.

Please specify: quantity and catalog number.

Catalog Numbers			
Ejector Group Sets	Set Screws	Spring	Pin
KP2	KPW 2	KPS 2	KPP 2
KP23	KPW 2	KPS 2	KPP 3
KP3	KPW 3	KPS 3	KPP 3
KP4	KPW 4	KPS 4	KPP 4
KP6	KPW 6	KPS 6	KPP 6
KP9	KPW 9	KPS 9	KPP 9

Ordering Example: 3 KP 3 Ejector Sets.

KPW (SET SCREW)

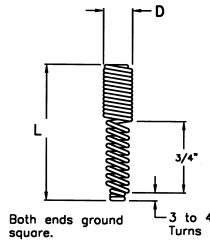


Available only in min. qty. of 10 units. To order, specify quantity & catalog number. See ordering example.

Catalog Number	D
KPW2	3 - 48
KPW3	5 - 40
KPW4	8 - 32
KPW6	10 - 32
KPW9	1/4 - 28

EXAMPLE: 15 KPW 3

KPS (SPRING)

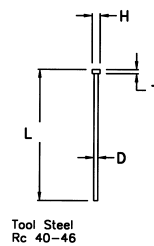


Available only in min. qty. of 10 units. To order, specify quantity & catalog number. See ordering example.

Catalog Number	D	L
KPS2	.084	2.37
KPS3	.107	2.37
KPS4	.139	3.19
KPS6	.170	3.00
KPS9	.221	3.03

EXAMPLE: 10 KPS 2

KPP (PIN)

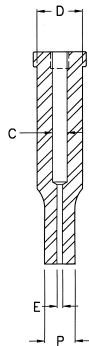


Available only in min. qty. of 10 units. To order, specify quantity & catalog number. See ordering example.

Catalog Number	D	L	H	T
KPP2	.015	1.10	.048	.031
KPP3	.027	1.38	.073	.046
KPP4	.041	1.94	.094	.062
KPP6	.058	1.94	.125	.062
KPP9	.089	2.22	.156	.093

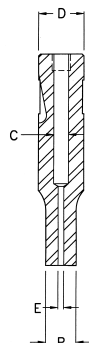
EXAMPLE: 24 KPP 4

KP (BASIC)



Basic Series Standard Ejector Data			
Ejector Group	Std. Shank Dia.	Point Hole Dia.	Shank Hole Dia.
	D	E	C
KP2	3/16	.020	.086
KP23	3/16	.032	.086
KP3	1/4	.032	.109
KP4	5/16	.046	.141
KP6	3/8 - 1/2	.063	.172
KP9	5/8 - 1	.094	.223

KP (BALL LOCK)



Ball Lock Standard Ejector Data			
Ejector Group	Std. Shank Dia.	Point Hole Dia.	Shank Hole Dia.
	D	E	C
KP2	1/4	.020	.086
KP23	1/4	.032	.086
KP4	3/8	.046	.141
KP6	1/2 - 5/8	.063	.172
KP9	3/4 - 1 1/4	.094	.223

Variable Precision Series

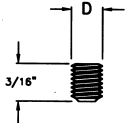
Available in single sets which include pin, spring and set screw; or individual components in minimum quantities of 10 pieces.

Please specify: quantity and catalog number.

Catalog Numbers			
Ejector Group Sets	Set Screws	Spring	Pin
VP2	VPW 2	VPS 2	VPP 2
VP3	VPW 3	VPS 3	VPP 3
VP4	VPW 4	VPS 4	VPP 4
VP6	VPW 6	VPS 6	VPP 6
VP9	VPW 9	VPS 9	VPP 9

Ordering Example: 3 VP 3 Ejector Sets.

VPW (SET SCREW)

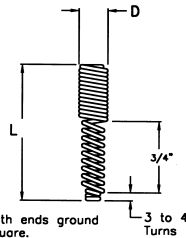


Available only in min. qty. of 10 units. To order, specify quantity & catalog number. See ordering example.

Catalog Number	D
VPW2	3 - 48
VPW3	5 - 40
VPW4	8 - 32
VPW6	10 - 32
VPW9	1/4 - 28

EXAMPLE: 15 VPW 3

VPS (SPRING)

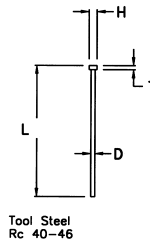


Available only in min. qty. of 10 units. To order, specify quantity & catalog number. See ordering example.

Catalog Number	D	L
VPS2	.084	2.37
VPS3	.107	2.37
VPS4	.139	3.19
VPS6	.170	3.00
VPS9	.221	3.03

EXAMPLE: 10 VPS 2

VPP (PIN)

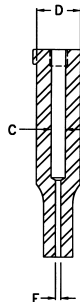


Available only in min. qty. of 10 units. To order, specify quantity & catalog number. See ordering example.

Catalog Number	D	L	H	T
VPP2	.015	1.10	.048	.031
VPP3	.027	1.38	.073	.046
VPP4	.041	1.94	.094	.062
VPP6	.058	1.94	.125	.062
VPP9	.089	2.22	.156	.093

EXAMPLE: 24 VPP 4

VP (VARIABLE)



Standard Ejector Data			
Ejector Group	Std. Shank Dia.	Point Hole Dia.	Shank Hole Dia.
	D	E	C
VP2	.1875	.020	.086
VP3	.2500	.032	.109
VP4	.3125	.046	.141
VP6	.3750 - .5000	.063	.172
VP9	.6250 - 1.000	.094	.223